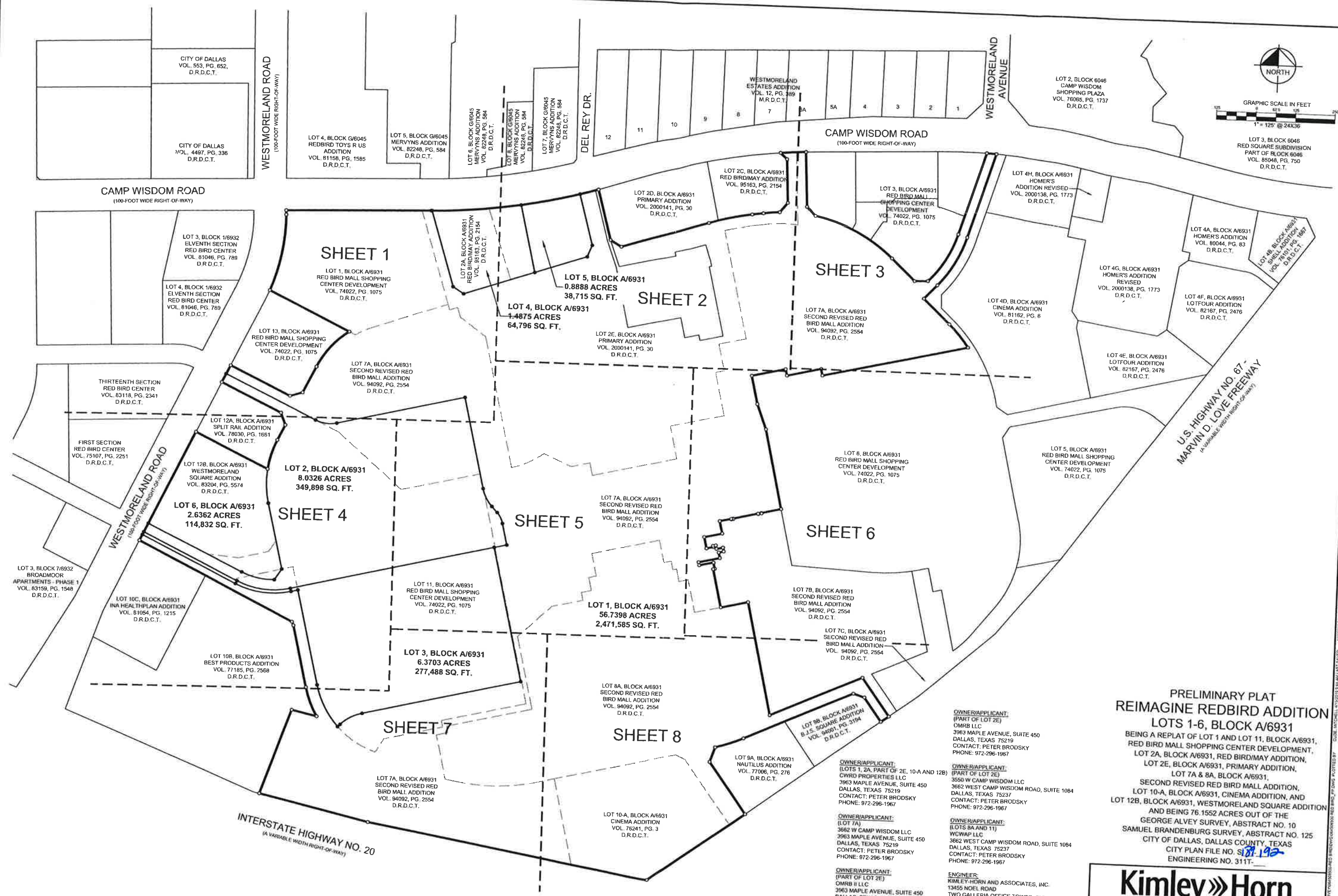
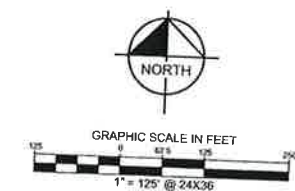


S 189-192



**PRELIMINARY PLAT
REIMAGINE REDBIRD ADDITION
LOTS 1-6, BLOCK A/6931**

BEING A REPLAT OF LOT 1 AND LOT 11, BLOCK A/6931,
REDBIRD MALL SHOPPING CENTER DEVELOPMENT,
LOT 2A, BLOCK A/6931, RED BIRD/MAY ADDITION,
LOT 2E, BLOCK A/6931, PRIMARY ADDITION,
LOT 7A & 8A, BLOCK A/6931,
SECOND REVISED RED BIRD MALL ADDITION,
LOT 10-A, BLOCK A/6931, CINEMA ADDITION, AND
LOT 12B, BLOCK A/6931, WESTMORELAND SQUARE ADDITION
AND BEING 76.1552 ACRES OUT OF THE
GEORGE ALVEY SURVEY, ABSTRACT NO. 10
SAMUEL BRANDENBURG SURVEY, ABSTRACT NO. 125
CITY OF DALLAS, DALLAS COUNTY, TEXAS
CITY PLAN FILE NO. S18-192
ENGINEERING NO. 311T-

OWNER/APPLICANT:
(PART OF LOT 2E)
OMR8 LLC
3963 MAPLE AVENUE, SUITE 450
DALLAS, TEXAS 75219
CONTACT: PETER BRODSKY
PHONE: 972-296-1967

OWNER/APPLICANT:
(PART OF LOT 2E)
CWRO PROPERTIES LLC
3550 W CAMP WISDOM LLC
3662 WEST CAMP WISDOM ROAD, SUITE 1084
DALLAS, TEXAS 75237
CONTACT: PETER BRODSKY
PHONE: 972-296-1967

OWNER/APPLICANT:
(PART OF LOT 2E)
OMR8 II LLC
3963 MAPLE AVENUE, SUITE 450
DALLAS, TEXAS 75219
CONTACT: PETER BRODSKY
PHONE: 972-296-1967

OWNER/APPLICANT:
(PART OF LOT 2E)
OMR8 III LLC
3963 MAPLE AVENUE, SUITE 450
DALLAS, TEXAS 75219
CONTACT: PETER BRODSKY
PHONE: 972-296-1967

OWNER/APPLICANT:
(PART OF LOT 2E)
OMR8 IV LLC
3963 MAPLE AVENUE, SUITE 450
DALLAS, TEXAS 75219
CONTACT: PETER BRODSKY
PHONE: 972-296-1967

ENGINEER:
KIMLEY-HORN AND ASSOCIATES, INC.
13455 NOEL ROAD
TWO GALLERIA OFFICE TOWER, SUITE 700
DALLAS, TEXAS 75240
CONTACT: JAMIE PLOETZNER, P.E.
PHONE: 972-770-1300

Kimley»Horn

13455 Noel Road, Two Galleria Office Tower, Suite 700, Dallas, Texas 75240 FIRM # 10115500
Tel No. (972) 770-1300 Fax No. (972) 239-3820

Scale	Drawn by	Checked by	Date	Project No.	Sheet No.
1" = 125'	JBH	JAD	FEB. 2019	064608500	1 OF 10

THIS DRAWING IS THE PROPERTY OF KIMLEY-HORN AND ASSOCIATES, INC. IT IS TO BE USED ONLY FOR THE PROJECT AND SITE SPECIFICALLY IDENTIFIED HEREON. IT IS NOT TO BE REPRODUCED, COPIED, OR TRANSMITTED IN ANY FORM OR BY ANY MEANS, ELECTRONIC OR MECHANICAL, INCLUDING PHOTOCOPYING, RECORDING, OR BY ANY INFORMATION STORAGE AND RETRIEVAL SYSTEM, WITHOUT THE WRITTEN PERMISSION OF KIMLEY-HORN AND ASSOCIATES, INC.

OWNERS CERTIFICATE

STATE OF TEXAS §
COUNTY OF DALLAS §

WHEREAS, 3662 W CAMP WISDOM LLC, 3550 W CAMP WISDOM LLC, OMRB LLC, OMRB II LLC, WCWAP LLC AND CWRD PROPERTIES LLC are the owners of the tracts of land situated in the George Alvey Survey, Abstract No. 125, and Samuel Brandenburg Survey, Abstract No. 125, City of Dallas, Texas...

BEGINNING at an "X" cut in concrete found at the intersection of the south right-of-way line of Camp Wisdom Road (100-foot wide right-of-way, Volume 2557, Page 30 and Volume 67253, Page 358 of said Deed Records) and the east right-of-way line of Westmoreland Road (100-foot wide right-of-way, Volume 67253, Page 354 of said Deed Records), for the northwest corner of said Lot 1;

THENCE with said south right-of-way line of Camp Wisdom Road, the following courses and distances:

North 88°37'04" East, a distance of 451.78 feet to an "X" cut in concrete found at the beginning of a tangent curve to the left having a central angle of 15°25'12", a radius of 1970.08 feet, a chord bearing and distance of North 80°54'28" East, 528.61 feet, in a northeasterly direction, with said curve to the left, an arc distance of 530.21 feet to a PK nail found for a north corner of said Lot 2E, and being the northwest corner of Lot 2D, Block A/6931 of said Primary Addition;

THENCE departing said south right-of-way line of Camp Wisdom Road, and with the north line of said Lot 2E, the following courses and distances:

South 15°19'40" East, a distance of 163.05 feet to a 5/8-inch iron rod with plastic cap stamped "KSC 4019" found for corner; South 60°23'52" East, a distance of 40.56 feet to a PK nail found for corner; North 72°35'50" East, a distance of 284.28 feet to an "X" cut in concrete found at the beginning of a non-tangent curve to the right having a central angle of 1°56'27", a radius of 898.00 feet, a chord bearing and distance of North 73°33'02" East, 30.42 feet, in a northeasterly direction, with said curve to the right, an arc distance of 30.42 feet to a 3-inch aluminum disk stamped "REIMAGE REDBIRD ADD, KHA" set for the southeast corner of said Lot 2D, and being the southwest corner of Lot 2C, Block A/6931 of said Red Bird/May Addition, and being the beginning of a compound curve to the right having a central angle of 6°55'50", a radius of 898.00 feet, a chord bearing and distance of North 77°58'11" East, 108.58 feet, from a said point a 5/8-inch iron rod found bears South 43°11'04" West, a distance of 0.30 feet to a PK nail found for a north corner of said Lot 2E, and being the northwest corner of Lot 2D, Block A/6931 of said Primary Addition;

THENCE in a northeasterly direction, with said south right-of-way line of Camp Wisdom Road and with said curve to the right, an arc distance of 80.65 feet to a 3-inch aluminum disk stamped "REIMAGE REDBIRD ADD, KHA" set for a north corner of said Lot 7A, and being the northwest corner of Lot 3, Block A/6931 of said Red Bird Mall Shopping Center Development;

THENCE departing said south right-of-way line of Camp Wisdom Road and with the north line of said Lot 7A, the following courses and distances:

South 3°01'20" East, a distance of 171.86 feet to a 3-inch aluminum disk stamped "REIMAGE REDBIRD ADD, KHA" set for corner; from said point a 1/2-inch iron rod found bears North 56°30'39" West, a distance of 2.32 feet; North 43°55'40" East, a distance of 39.71 feet to a 3-inch aluminum disk stamped "REIMAGE REDBIRD ADD, KHA" set at the beginning of a non-tangent curve to the right having a central angle of 32°20'00", a radius of 493.00 feet, a chord bearing and distance of South 63°07'56" East, 274.54 feet; from said point a 1/2-inch iron rod found bears North 51°23'41" West, a distance of 2.51 feet; in a southeasterly direction, with said curve to the right, an arc distance of 278.21 feet to a 3-inch aluminum disk stamped "REIMAGE REDBIRD ADD, KHA" set for corner; from said point a 1/2-inch iron rod found bears North 58°38'49" West, a distance of 2.39 feet; North 46°57'56" East, a distance of 109.00 feet to a 3-inch aluminum disk stamped "REIMAGE REDBIRD ADD, KHA" set for corner; North 88°02'04" East, a distance of 42.15 feet to a 3-inch aluminum disk stamped "REIMAGE REDBIRD ADD, KHA" set at the beginning of a non-tangent curve to the left having a central angle of 27°29'14", a radius of 370.00 feet, a chord bearing and distance of North 31°08'58" East, 175.81 feet; in a northeasterly direction, with said curve to the left, an arc distance of 177.51 feet to a 3-inch aluminum disk stamped "REIMAGE REDBIRD ADD, KHA" set for corner; North 17°24'21" East, a distance of 270.42 feet to a mag nail with washer stamped "REIMAGE REDBIRD ADD, KHA" set in said south right-of-way line of Camp Wisdom Road, for the northernmost northeast corner of said Lot 7A, and being the northeast corner of said Lot 3, and being the beginning of a non-tangent curve to the right having a central angle of 0°57'40", a radius of 1850.08 feet, a chord bearing and distance of South 67°24'12" East, 31.03 feet; from said point an "X" cut in concrete found bears South 11°25'29" East, a distance of 1.03 feet;

THENCE in a southeasterly direction, with said south right-of-way line of Camp Wisdom Road and with said curve to the right, an arc distance of 31.03 feet to a 3-inch aluminum disk stamped "REIMAGE REDBIRD ADD, KHA" set for the easternmost northeast corner of said Lot 7A, and being the northwest corner of Lot 6, Block A/6931 of said Red Bird Mall Shopping Center Development;

THENCE departing said south right-of-way line of Camp Wisdom Road, with the west line of said Lot 6 and with the east line of said Lot 7A, the following courses and distances:

South 17°24'21" West, a distance of 278.35 feet to a 3-inch aluminum disk stamped "REIMAGE REDBIRD ADD, KHA" set at the beginning of a tangent curve to the right having a central angle of 25°37'43", a radius of 400.00 feet, a chord bearing and distance of South 30°13'12" West, 177.43 feet; in a southwesterly direction, with said curve to the right, an arc distance of 178.92 feet to a 3-inch aluminum disk stamped "REIMAGE REDBIRD ADD, KHA" set for corner; South 43°02'04" West, a distance of 59.81 feet to a mag nail with washer stamped "REIMAGE REDBIRD ADD, KHA" set for corner; from said point a PK nail found bears North 1°57'09" East, a distance of 2.89 feet; South 46°57'56" East, a distance of 114.01 feet to a mag nail with washer stamped "REIMAGE REDBIRD ADD, KHA" set at the beginning of a tangent curve to the right having a central angle of 11°23'12", a radius of 475.00 feet, a chord bearing and distance of South 41°16'20" East, 94.24 feet; in a southeasterly direction, with said curve to the right, an arc distance of 94.40 feet to a mag nail with washer stamped "REIMAGE REDBIRD ADD, KHA" set for corner; South 77°02'04" West, a distance of 467.49 feet to a mag nail with washer stamped "REIMAGE REDBIRD ADD, KHA" set for corner; South 12°57'56" West, a distance of 20.80 feet to a mag nail with washer stamped "REIMAGE REDBIRD ADD, KHA" set for corner; South 77°02'04" West, a distance of 110.00 feet to a mag nail with washer stamped "REIMAGE REDBIRD ADD, KHA" set for corner; North 12°57'56" West, a distance of 20.80 feet to a mag nail with washer stamped "REIMAGE REDBIRD ADD, KHA" set for corner; South 77°02'04" West, a distance of 110.00 feet to a mag nail with washer stamped "REIMAGE REDBIRD ADD, KHA" set for corner; South 12°57'56" East, a distance of 90.82 feet to a mag nail with washer stamped "REIMAGE REDBIRD ADD, KHA" set for corner; South 21°11'03" East, a distance of 83.95 feet to a point for corner in building; South 12°57'56" East, a distance of 295.32 feet to a point for corner in building, and being a southeast corner of said Lot 7A;

THENCE departing said west line of Lot 6 and continuing with said east line of Lot 7A, the following courses and distances:

South 77°02'04" West, a distance of 64.12 feet to a point for corner in building; South 12°57'56" East, a distance of 1.54 feet to a point for corner in building; South 77°02'04" West, a distance of 10.92 feet to a point for corner in building; North 12°57'56" West, a distance of 1.54 feet to a point for corner in building; South 77°02'04" West, a distance of 80.75 feet to a point for corner in building; South 12°57'56" East, a distance of 1.54 feet to a point for corner in building; South 77°02'04" West, a distance of 5.92 feet to a point for corner in building;

OWNER/APPLICANT: (LOTS 1, 2A, PART OF 2E, 10-A AND 12B) CWRD PROPERTIES LLC 3963 MAPLE AVENUE, SUITE 450 DALLAS, TEXAS 75219 CONTACT: PETER BRODSKY PHONE: 972-296-1967

OWNER/APPLICANT: (LOT 7A) 3662 W CAMP WISDOM LLC 3963 MAPLE AVENUE, SUITE 450 DALLAS, TEXAS 75219 CONTACT: PETER BRODSKY PHONE: 972-296-1967

OWNER/APPLICANT: (PART OF LOT 2E) OMRB II LLC 3963 MAPLE AVENUE, SUITE 450 DALLAS, TEXAS 75219 CONTACT: PETER BRODSKY PHONE: 972-296-1967

OWNER/APPLICANT: (PART OF LOT 2E) OMRB LLC 3963 MAPLE AVENUE, SUITE 450 DALLAS, TEXAS 75219 CONTACT: PETER BRODSKY PHONE: 972-296-1967

OWNER/APPLICANT: (PART OF LOT 2E) 3550 W CAMP WISDOM LLC 3662 WEST CAMP WISDOM ROAD, SUITE 1084 DALLAS, TEXAS 75237 CONTACT: PETER BRODSKY PHONE: 972-296-1967

OWNER/APPLICANT: (LOTS 6A AND 11) WCWAP LLC 3662 WEST CAMP WISDOM ROAD, SUITE 1084 DALLAS, TEXAS 75240 CONTACT: PETER BRODSKY PHONE: 972-296-1967

ENGINEER: KIMLEY-HORN AND ASSOCIATES, INC. 13455 NOEL ROAD TWO GALLERIA OFFICE TOWER, SUITE 700 DALLAS, TEXAS 75240 CONTACT: JAMIE PLOETZNER, P.E. PHONE: 972-770-1300

North 12°57'56" West, a distance of 1.54 feet to a point for corner in building; South 77°02'04" West, a distance of 80.75 feet to a point for corner in building; South 12°57'56" East, a distance of 1.54 feet to a point for corner in building; South 77°02'04" West, a distance of 5.92 feet to a point for corner in building; North 12°57'56" West, a distance of 1.54 feet to a point for corner in building; South 77°02'04" West, a distance of 36.46 feet to a point for corner in building; South 12°57'56" East, a distance of 40.00 feet to a point for corner in building; South 77°02'04" West, a distance of 56.80 feet to a point for corner in building; North 12°57'56" East, a distance of 21.50 feet to a point for corner in building; North 77°02'04" East, a distance of 4.00 feet to a point for corner in building; North 77°02'04" East, a distance of 8.50 feet to a point for corner in building; South 12°57'56" East, a distance of 11.25 feet to a point for corner in building; North 77°02'04" East, a distance of 20.48 feet to a point for corner in building; South 12°57'56" West, a distance of 12.50 feet to a point for corner in building; South 77°02'04" West, a distance of 18.00 feet to a point for corner in building; South 12°57'56" East, a distance of 67.00 feet to a point for corner in building; South 12°57'56" East, a distance of 10.00 feet to a mag nail with washer stamped "REIMAGE REDBIRD ADD, KHA" set for corner; South 77°00'04" East, a distance of 45.00 feet to a point for corner in building; South 12°57'56" West, a distance of 20.00 feet to a mag nail with washer stamped "REIMAGE REDBIRD ADD, KHA" set for corner; South 77°00'04" East, a distance of 5.00 feet to a 3-inch aluminum disk stamped "REIMAGE REDBIRD ADD, KHA" set for corner; South 12°57'56" East, a distance of 122.58 feet to a mag nail with washer stamped "REIMAGE REDBIRD ADD, KHA" set in the north of said Lot 8A, for a southeast corner of said Lot 7A;

THENCE with east line of said Lot 8A, the following courses and distances:

North 77°02'04" East, a distance of 87.75 feet to a mag nail with washer stamped "REIMAGE REDBIRD ADD, KHA" set for corner; South 12°57'56" East, a distance of 361.69 feet to a mag nail with washer stamped "REIMAGE REDBIRD ADD, KHA" set for corner; from said point a PK nail found bears South 77°07'03" West, a distance of 1.39 feet; North 66°02'29" East, a distance of 317.40 feet to a mag nail with washer stamped "REIMAGE REDBIRD ADD, KHA" set for corner; from said point a PK nail found bears South 47°29'36" West, a distance of 1.49 feet; South 36°02'56" East, a distance of 147.14 feet to a mag nail with washer stamped "REIMAGE REDBIRD ADD, KHA" set for corner; from said point a PK nail found bears South 47°29'36" West, a distance of 1.49 feet; U.S. Highway No. 67 - Marvin D. Love Freeway (a variable width right-of-way), for the easternmost southeast corner of said Lot 8A, and being the southeast corner of Lot 9B, Block A/6931;

THENCE with said northwest U.S. Highway No. 67 - Marvin D. Love Freeway (a variable width right-of-way), the following courses and distances:

South 53°57'04" West, a distance of 30.00 feet to a 3-inch aluminum disk stamped "REIMAGE REDBIRD ADD, KHA" set for the southernmost southeast corner of said Lot 8A, and being the southeast corner of Lot 9B, Block A/6931;

THENCE departing said northwest U.S. Highway No. 67 - Marvin D. Love Freeway (a variable width right-of-way) and with the south line of said Lot 8A, the following courses and distances:

North 36°02'56" West, a distance of 92.06 feet to a 3-inch aluminum disk stamped "REIMAGE REDBIRD ADD, KHA" set for corner; North 72°33'32" West, a distance of 38.50 feet to a 3-inch aluminum disk stamped "REIMAGE REDBIRD ADD, KHA" set for corner; South 66°02'29" West, a distance of 377.25 feet to a mag nail with washer stamped "REIMAGE REDBIRD ADD, KHA" set for corner; the right having a central angle of 8°38'55", a radius of 618.00 feet, a chord bearing and distance of South 70°21'55" West, 93.19 feet; in a southwesterly direction, with said curve to the right, an arc distance of 93.26 feet to a mag nail with washer stamped "REIMAGE REDBIRD ADD, KHA" set for corner; South 18°40'47" West, a distance of 49.00 feet to a mag nail with washer stamped "REIMAGE REDBIRD ADD, KHA" set for corner; South 36°02'56" East, a distance of 198.45 feet to a mag nail with washer stamped "REIMAGE REDBIRD ADD, KHA" set for corner; D. Love Freeway (a variable width right-of-way), for a south corner of said Lot 8A;

THENCE with said northwest U.S. Highway No. 67 - Marvin D. Love Freeway (a variable width right-of-way), the following courses and distances:

South 53°57'04" West, a distance of 378.01 feet to a 3-inch aluminum disk stamped "REIMAGE REDBIRD ADD, KHA" set at the intersection of said northwest U.S. Highway No. 67 - Marvin D. Love Freeway (a variable width right-of-way) and the northeast right-of-way line of Interstate Highway No. 20 (a variable width right-of-way), for the south corner of said Lot 10-A;

THENCE with said northeast right-of-way line of Interstate Highway No. 20, the following courses and distances:

North 80°02'06" West, a distance of 902.74 feet to a 3-inch aluminum disk stamped "REIMAGE REDBIRD ADD, KHA" set for corner; North 76°48'06" West, a distance of 356.75 feet to a 3-inch aluminum disk stamped "REIMAGE REDBIRD ADD, KHA" set for corner; South 66°02'29" West, a distance of 377.25 feet to a mag nail with washer stamped "REIMAGE REDBIRD ADD, KHA" set for corner; the right having a central angle of 8°38'55", a radius of 618.00 feet, a chord bearing and distance of South 70°21'55" West, 93.19 feet; in a southwesterly direction, with said curve to the right, an arc distance of 93.26 feet to a mag nail with washer stamped "REIMAGE REDBIRD ADD, KHA" set for corner; South 18°40'47" West, a distance of 49.00 feet to a mag nail with washer stamped "REIMAGE REDBIRD ADD, KHA" set for corner; South 36°02'56" East, a distance of 198.45 feet to a mag nail with washer stamped "REIMAGE REDBIRD ADD, KHA" set for corner; D. Love Freeway (a variable width right-of-way), for a south corner of said Lot 8A;

THENCE departing said northeast right-of-way line of Interstate Highway No. 20 and with the west line of said Lot 7A, the following courses and distances:

North 20°01'30" East, a distance of 282.00 feet to a 3-inch aluminum disk stamped "REIMAGE REDBIRD ADD, KHA" set for corner; South 76°48'06" East, a distance of 81.41 feet to a mag nail with washer stamped "REIMAGE REDBIRD ADD, KHA" set for corner; to the right having a central angle of 17°37'11", a radius of 318.00 feet, a chord bearing and distance of North 21°46'32" West, 97.41 feet; in a northwesterly direction, with said curve to the right, an arc distance of 97.79 feet to a mag nail with washer stamped "REIMAGE REDBIRD ADD, KHA" set for corner; North 12°57'56" West, a distance of 98.45 feet to a mag nail with washer stamped "REIMAGE REDBIRD ADD, KHA" set for corner; North 23°53'52" West, a distance of 12.16 feet to a mag nail with washer stamped "REIMAGE REDBIRD ADD, KHA" set for corner; North 63°06'56" West, a distance of 543.96 feet to a mag nail with washer stamped "REIMAGE REDBIRD ADD, KHA" set for corner; Westmoreland Road (100-foot wide right-of-way, Volume 67253, Page 354 of said Deed Records), for the westernmost southwest corner of said Lot 7A, and being the northwest corner of Lot 10C, Block A/6931, Ina Healthplan Addition, an addition to the City of Dallas, Texas according to the plat recorded in Volume 81054, Page 1215 of said Deed Records;

THENCE with said east right-of-way line of Westmoreland Road, North 26°16'04" East, a distance of 383.99 feet to a mag nail with washer stamped "REIMAGE REDBIRD ADD, KHA" set for the northeast corner of said Lot 12B, and being the southwest corner of Lot 12A, Block A/6931, Split Rail Addition, an addition to the City of Dallas, Texas according to the plat recorded in Volume 78030, Page 1661 of said Deed Records;

THENCE departing said east right-of-way line of Westmoreland Road and with the south, east and north lines of said Lot 12A, the following courses and distances:

South 63°43'56" East, a distance of 253.53 feet to a mag nail with washer stamped "REIMAGE REDBIRD ADD, KHA" set at the beginning of a non-tangent curve to the right having a central angle of 18°32'50", a radius of 298.00 feet, a chord bearing and distance of North 17°02'04" East, 96.04 feet; in a northeasterly direction, with said curve to the right, an arc distance of 96.46 feet to a mag nail with washer stamped "REIMAGE REDBIRD ADD, KHA" set for corner; North 26°22'29" East, a distance of 53.13 feet to a mag nail with washer stamped "REIMAGE REDBIRD ADD, KHA" set for corner; North 20°39'03" West, a distance of 41.07 feet to a 1/2-inch iron rod found corner; North 63°43'56" West, a distance of 208.33 feet to a PK nail found in said east right-of-way line of Westmoreland Road, for the northwest corner of said Lot 12B, and being the westernmost northwest corner of said Lot 11;

THENCE with said east right-of-way line of Westmoreland Road, North 26°16'04" East, a distance of 60.00 feet to a mag nail with washer stamped "REIMAGE REDBIRD ADD, KHA" set for the northernmost northwest corner of said Lot 7A, and being the southwest corner of Lot 13, Block A/6931 of said Red Bird Mall Shopping Center Development;

THENCE departing said east right-of-way line of Westmoreland Road and with the south and east lines of said Lot 13, the following courses and distances:

South 63°43'56" East, a distance of 208.55 feet to a point for corner; North 73°17'57" East, a distance of 41.00 feet to a mag nail with washer stamped "REIMAGE REDBIRD ADD, KHA" set for corner; North 26°22'29" East, a distance of 91.83 feet to a mag nail with washer stamped "REIMAGE REDBIRD ADD, KHA" set for corner; the right having a central angle of 30°18'01", a radius of 288.00 feet, a chord bearing and distance of North 41°31'29" East, 150.54 feet; in a northeasterly direction, with said curve to the right, an arc distance of 152.31 feet to a mag nail with washer stamped "REIMAGE REDBIRD ADD, KHA" set for corner; in the south line of said Lot 1, for the northeast corner of said Lot 13, and being a north corner of said Lot 7A;

THENCE with said south line of Lot 1, North 63°43'56" West, a distance of 279.71 feet to a 5/8-inch iron rod found in said east right-of-way line of Westmoreland Road, bearing and distance of North 10°41'22" East, 243.45 feet;

THENCE with said east right-of-way line of Westmoreland Road, the following courses and distances:

In a northeasterly direction, with said curve to the left, an arc distance of 245.15 feet to a 5/8-inch iron rod found for corner; North 1°00'56" West, a distance of 13.63 feet to the POINT OF BEGINNING and containing 76.1552 acres or 3,317,315 square feet of land;

Bearing system based on the Texas Coordinate System of 1983, North Central Zone (4202), North American Datum of 1983 (2011).

OWNER'S DEDICATION

NOW THEREFORE, KNOW ALL MEN BY THESE PRESENTS:

That, 3550 W CAMP WISDOM LLC, 3662 W CAMP WISDOM LLC, WCWAP LLC, OMRB LLC, OMRB II LLC and CWRD PROPERTIES LLC, acting by and through their duly authorized agents, do hereby adopt this plat, designating the herein described property as REIMAGE REDBIRD ADDITION, an addition to the City of Dallas, Texas, and do hereby dedicate, in fee simple, to the public use forever any streets, alleys, and roadway management areas shown thereon, easements shown thereon are hereby reserved for the purpose indicated. The utility and fire lane easements, alleys, and roadway management areas shown thereon, the utility and fire lane easements shall be open to the public, fire and police utilities, and rubbish collection agencies, and all public and private utilities for each particular use. The maintenance of paving on the utility and fire lane easements is the responsibility of the property owner. No buildings, fences, trees, shrubs, or other improvements or growths shall be constructed, reconstructed or placed upon, over and across the easements as shown. Said easements being hereby reserved for the mutual use and accommodation of all public utilities using or desiring to use same. All way may endanger or interfere with the construction, maintenance or efficiency of any building, fences, trees, shrubs, or other improvements or growths which in any way may endanger or interfere with the construction, maintenance or efficiency of any building, fences, trees, shrubs, or other improvements or growths which in any removing all or parts of its respective systems without the necessity at any time of procuring the permission of anyone. Any public utility shall have the right of ingress and egress to private property for the purpose of reading meters and any maintenance or service required or ordinarily performed by that utility.

Water main and wastewater easements shall also include additional area of working space for construction and maintenance of the systems. Additional easement area is also conveyed for installation and maintenance of manholes, cleanouts, fire hydrants, water services and wastewater services from the main to the curb or pavement line, and description of such additional easements herein granted shall be determined by their location as installed.

This plat approved subject to all platting ordinances, rules, regulations, and resolutions of the City of Dallas.

WITNESS, my hand at this the ___ day of ___, 2019.

By: 3550 W CAMP WISDOM LLC, 3662 W CAMP WISDOM LLC, WCWAP LLC, OMRB LLC, OMRB II LLC and CWRD PROPERTIES LLC

Name: Peter Brodsky Title: Manager

STATE OF TEXAS COUNTY OF DALLAS

BEFORE ME, the undersigned, a Notary Public in and for the said County and State, on this day personally appeared Peter Brodsky, known to me to be the person whose name is subscribed to the foregoing instrument and acknowledged to me that he executed the same for the purpose therein expressed and under oath stated that the statements in the foregoing certificate are true.

GIVEN UNDER MY HAND AND SEAL OF OFFICE this the ___ day of ___, 2019.

Notary Public in and for the State of Texas

SURVEYOR'S STATEMENT

I, J. Andy Dobbs, a Registered Professional Land Surveyor, licensed by the State of Texas, affirm that this plat was prepared under my direct supervision, from the Rules and Regulations of the Texas Board of Professional Land Surveying, the City of Dallas Development Code (Ordinance No. 19455, as amended), and Texas Local Government Code, Chapter 212. I further affirm that monumentation shown hereon was either found or placed in compliance with the City of Dallas Development Code, Sec. 51A-8.617 (a)(b)(c)(d) & (e); and that the digital drawing file accompanying this plat is a precise representation of this Signed Final Plat.

Dated this the ___ day of ___, 2019.

PRELIMINARY THE DOCUMENT SHALL NOT BE RECORDED FOR ANY PURPOSE AND SHALL NOT BE USED OR RELIED UPON AS A FINAL SURVEY DOCUMENT. J. Andy Dobbs Registered Professional Land Surveyor No. 6196 Kimley-Horn and Associates, Inc. 13455 Noel Road Two Galleria Office Tower, Suite 700 Dallas, Texas 75240 Ph. 972-770-1300 andy.dobbs@kimley-horn.com

STATE OF TEXAS COUNTY OF DALLAS

BEFORE ME, the undersigned, a Notary Public in and for the said County and State, on this day personally appeared J. Andy Dobbs, known to me to be the person whose name is subscribed to the foregoing instrument and acknowledged to me that he executed the same for the purpose therein expressed and under oath stated that the statements in the foregoing certificate are true.

GIVEN UNDER MY HAND AND SEAL OF OFFICE this the ___ day of ___, 2019.

Notary Public in and for the State of Texas

PRELIMINARY PLAT REIMAGINE REDBIRD ADDITION LOTS 1-6, BLOCK A/6931 BEING A REPLAT OF LOT 1 AND LOT 11, BLOCK A/6931, RED BIRD MALL SHOPPING CENTER DEVELOPMENT, LOT 2A, BLOCK A/6931, RED BIRD/MAY ADDITION, LOT 2E, BLOCK A/6931, PRIMARY ADDITION, LOT 7A & 8A, BLOCK A/6931, SECOND REVISED RED BIRD MALL ADDITION, LOT 10-A, BLOCK A/6931, CINEMA ADDITION, AND LOT 12B, BLOCK A/6931, WESTMORELAND SQUARE ADDITION AND BEING 76.1552 ACRES OUT OF THE GEORGE ALVEY SURVEY, ABSTRACT NO. 10 SAMUEL BRANDENBURG SURVEY, ABSTRACT NO. 125 CITY OF DALLAS, DALLAS COUNTY, TEXAS CITY PLAN FILE NO. 8109-192 ENGINEERING NO. 3111-

Kimley Horn 13455 Noel Road, Two Galleria Office Tower, Suite 700, Dallas, Texas 75240 FIRM # 10115500 Tel. No. (972) 770-1300 Fax No. (972) 239-3820

Table with 6 columns: Scale, Drawn by, Checked by, Date, Project No., Sheet No. Values: N/A, JBH, JAD, FEB. 2019, 064508500, 10 OF 10

FILED: MICHELLE L. BRIDGES, COUNTY CLERK, DALLAS COUNTY, TEXAS